

Axial skeleton

Vertebrae and Bony Thorax

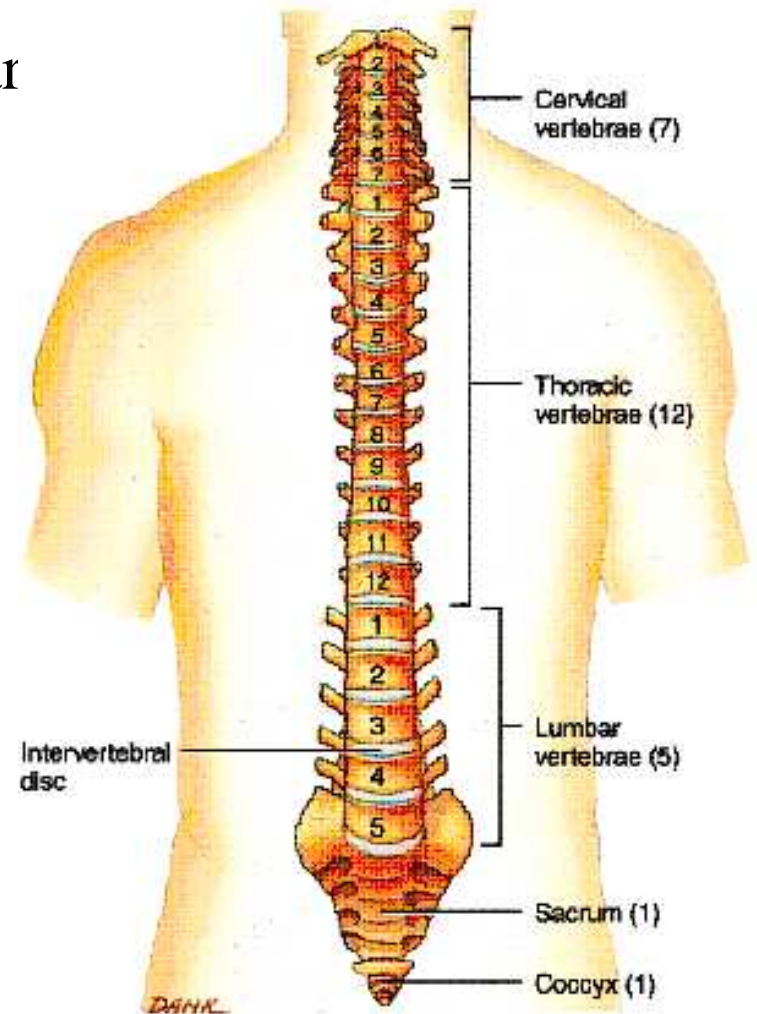
The vertebral column is made up of 26 bones:

24 vertebrae:

7 cervical, 12 thoracic, 5 lumbar

sacrum

coccyx



Curvatures of the spine

1. Primary

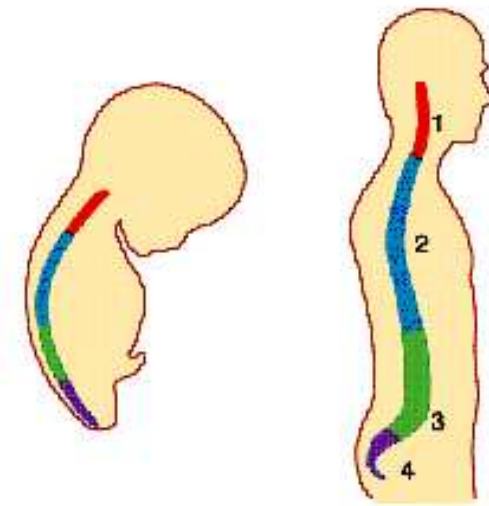
a. Thoracic

b. Sacral

2. Secondary

a. Cervical

b. Lumbar

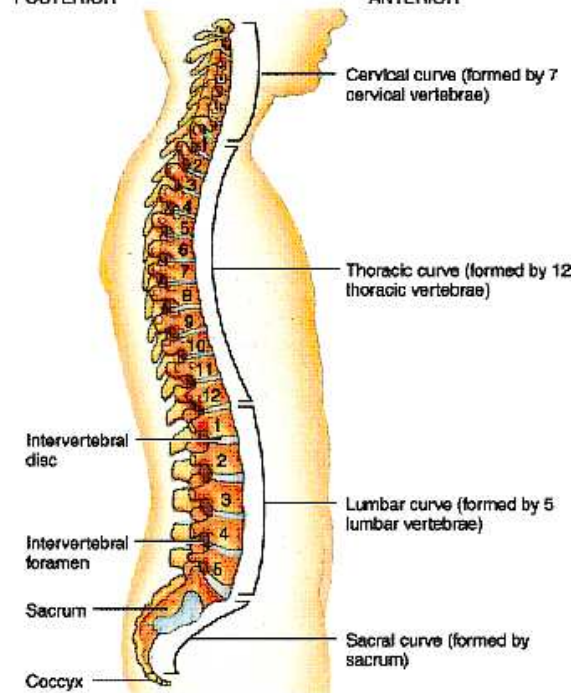


Single curve in fetus

Four curves in adult

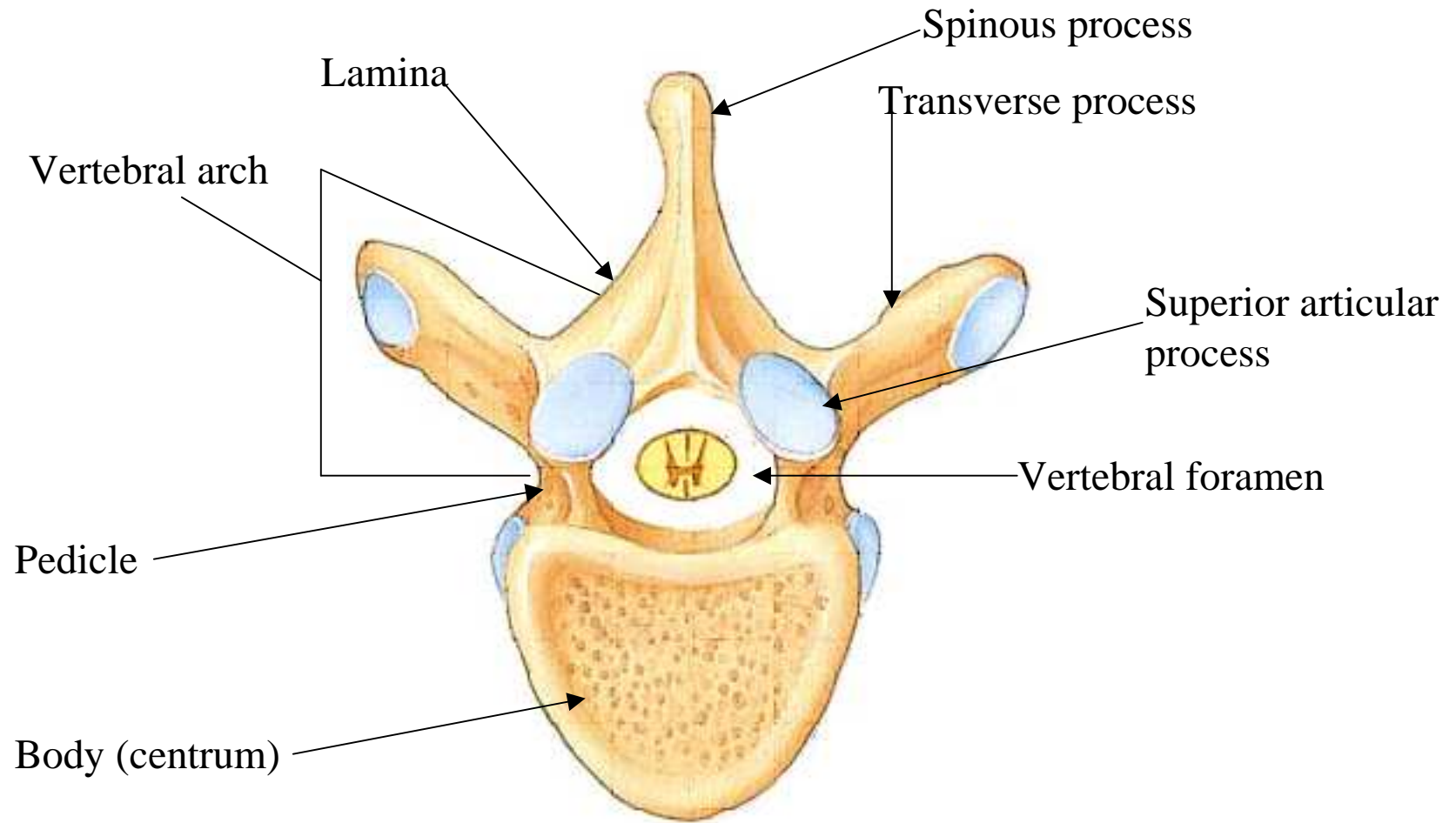
POSTERIOR

ANTERIOR

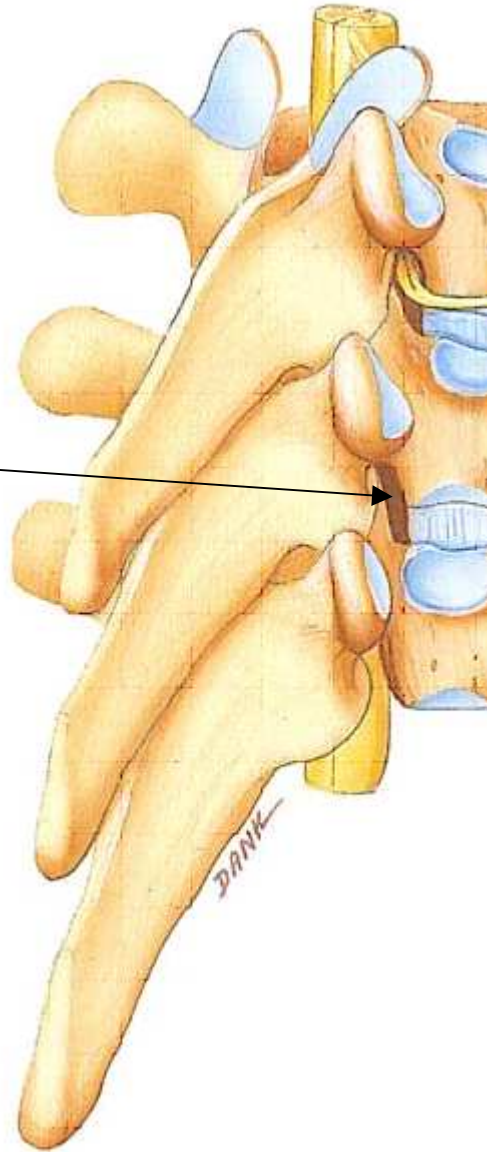


(b) Right lateral view showing four normal curves

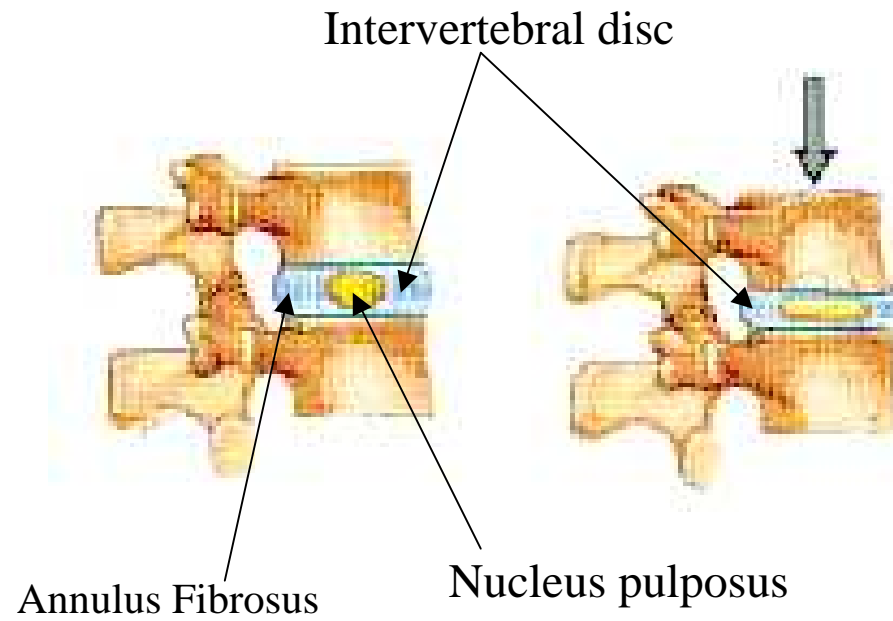
Features Common to all Vertebrae



Intervertebral
Foramen



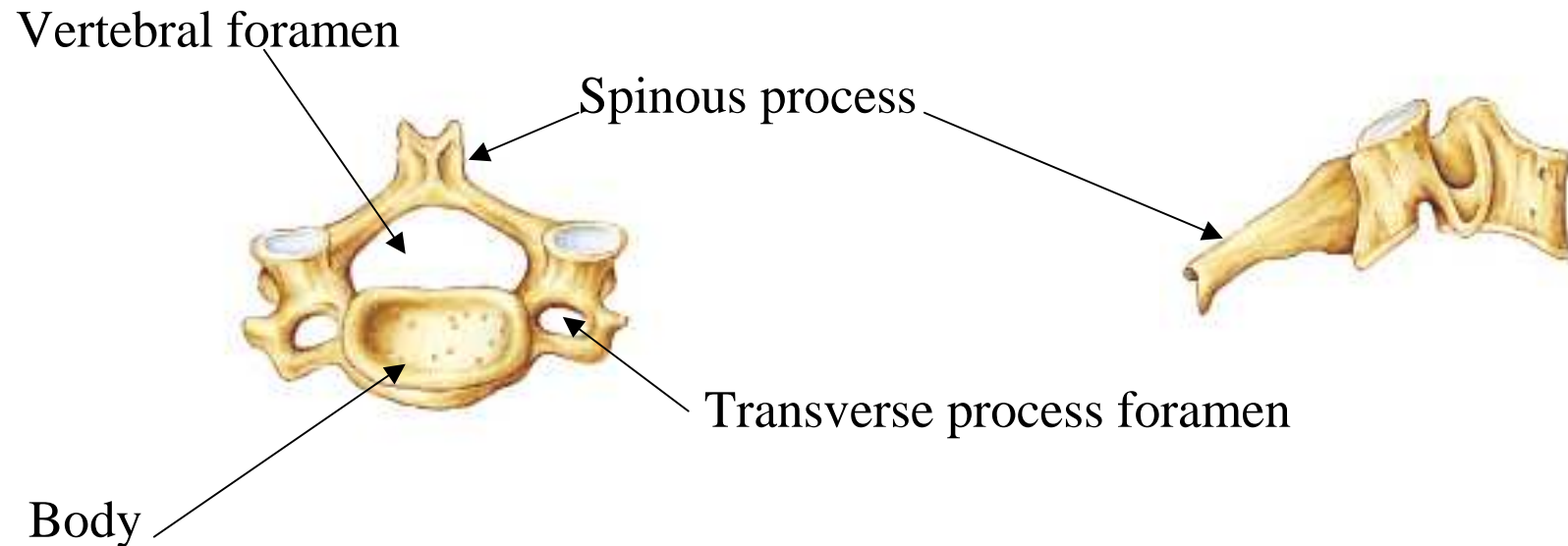
Intervertebral Discs



Classification of Vertebrae

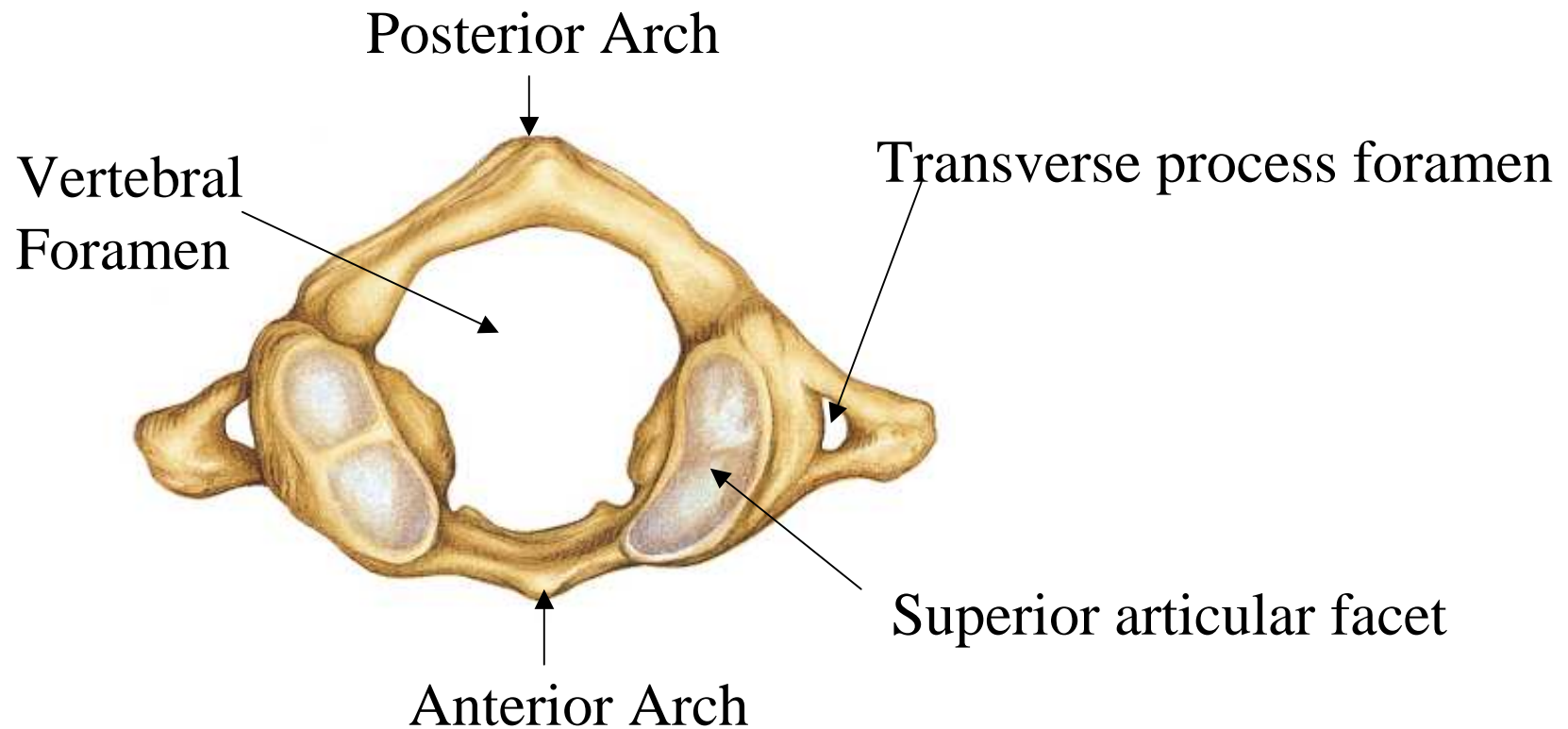
A. Cervical - First seven vertebrae (neck region) (C1-C7)

Distinguishing Characteristics of Typical Cervical Vertebra

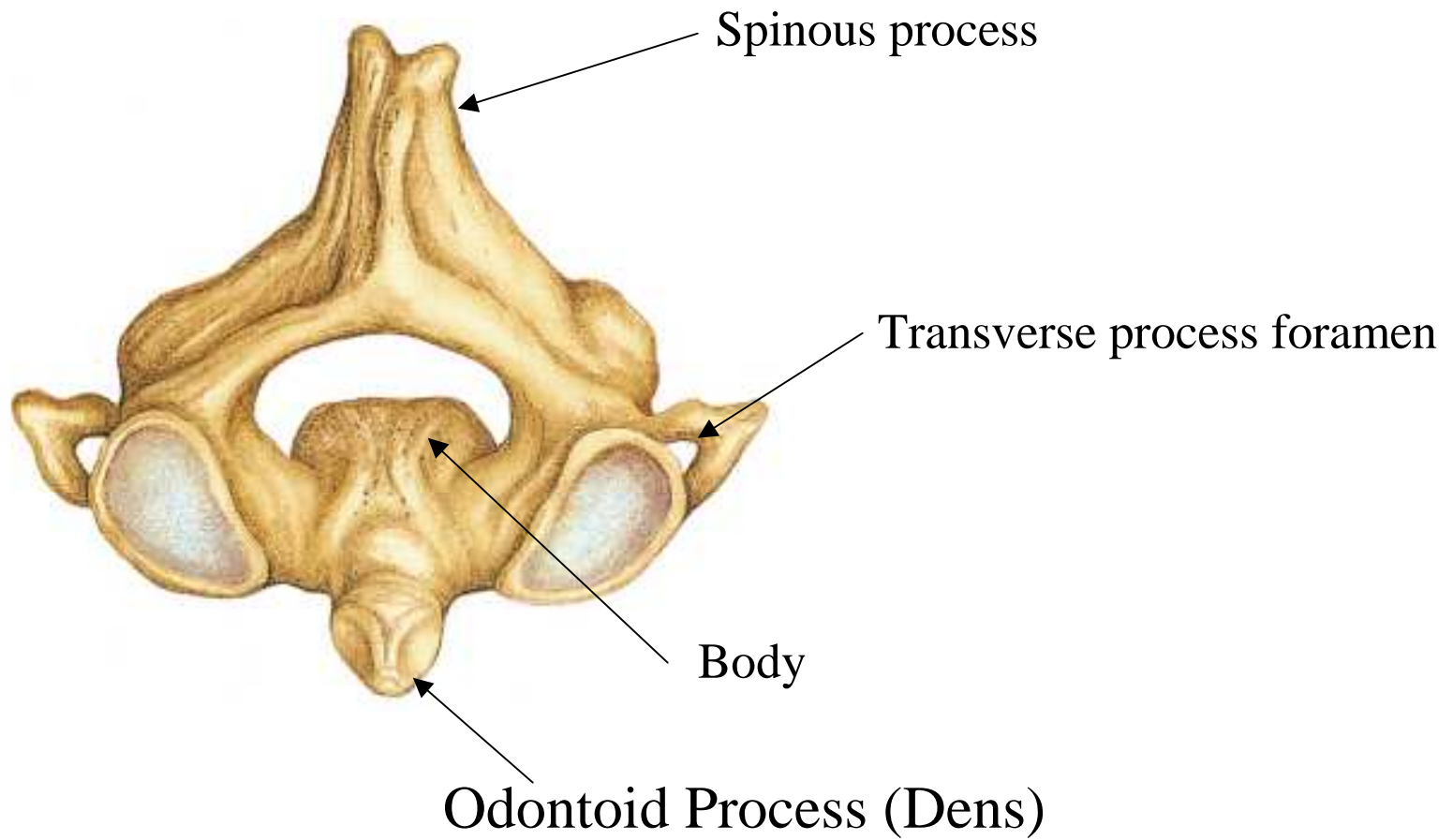


Atlas (C1)

First Two Cervical Vertebrae Are Very Specialized



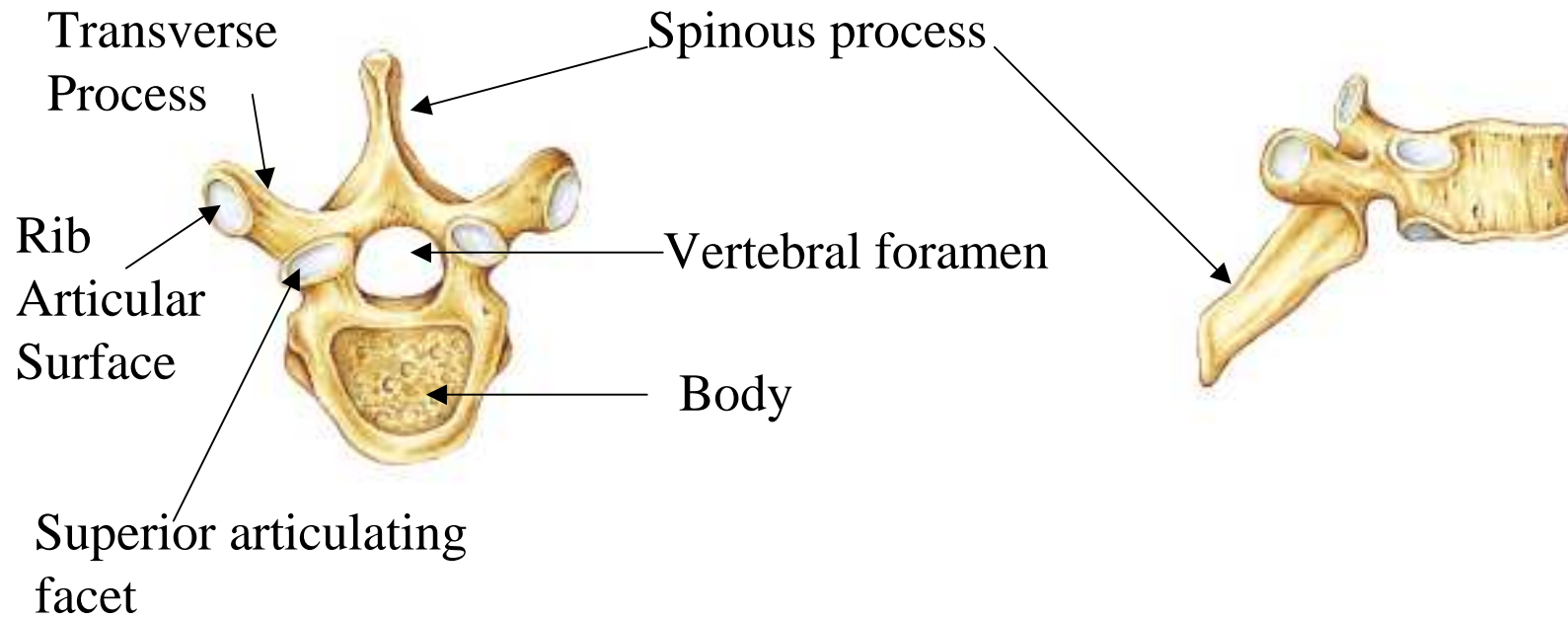
Axis (C2)



Thoracic Vertebrae

12 in number

Distinguishing Characteristics

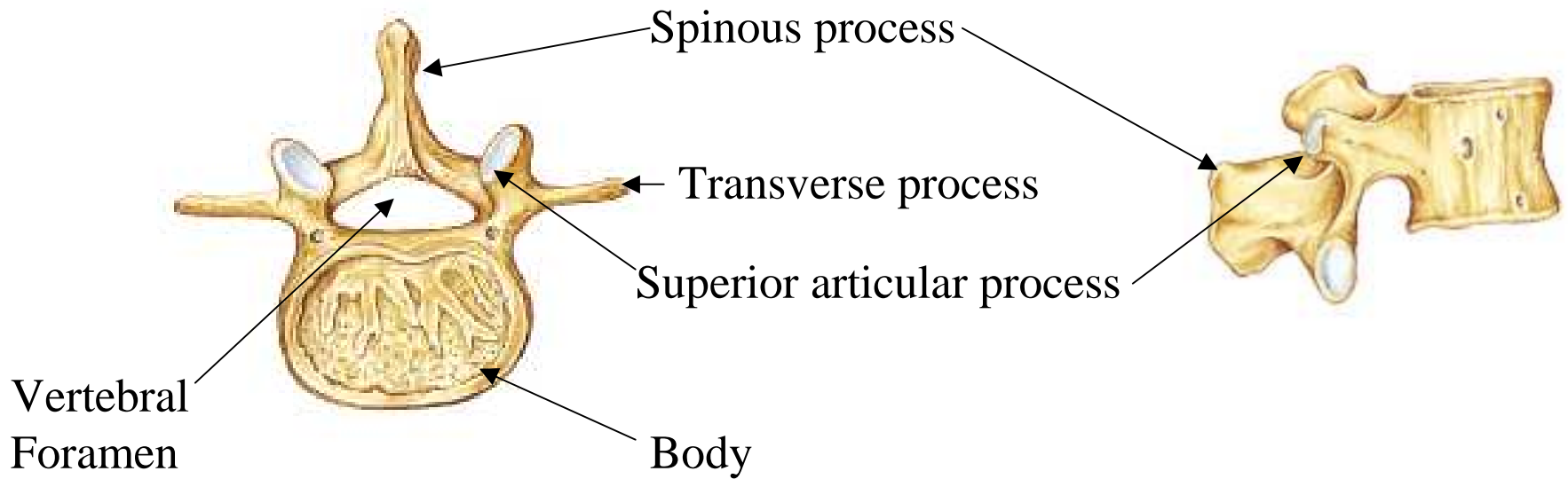


Lumbar vertebrae

5 in number

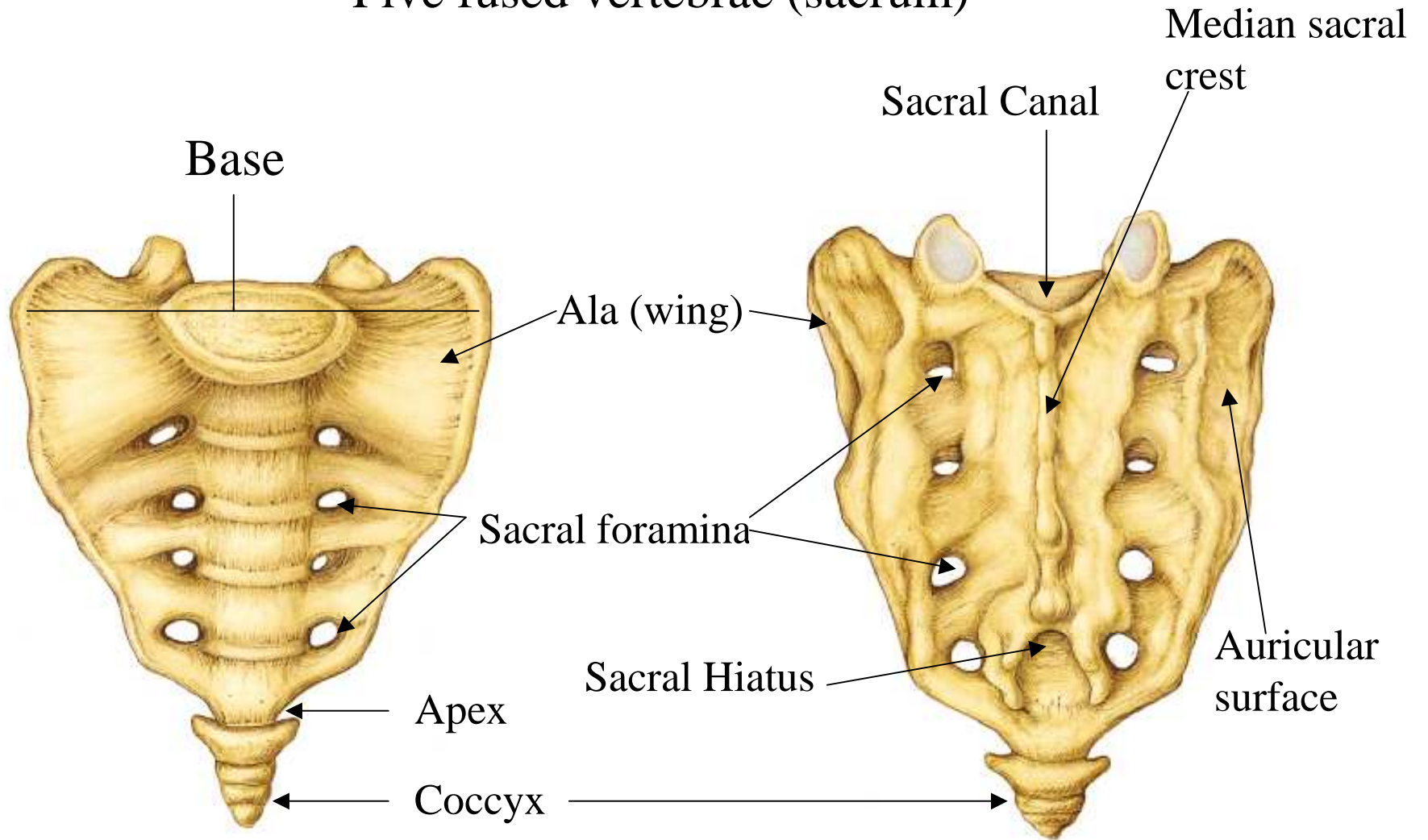
(L1-L5, lower back region)

Distinguishing characteristics

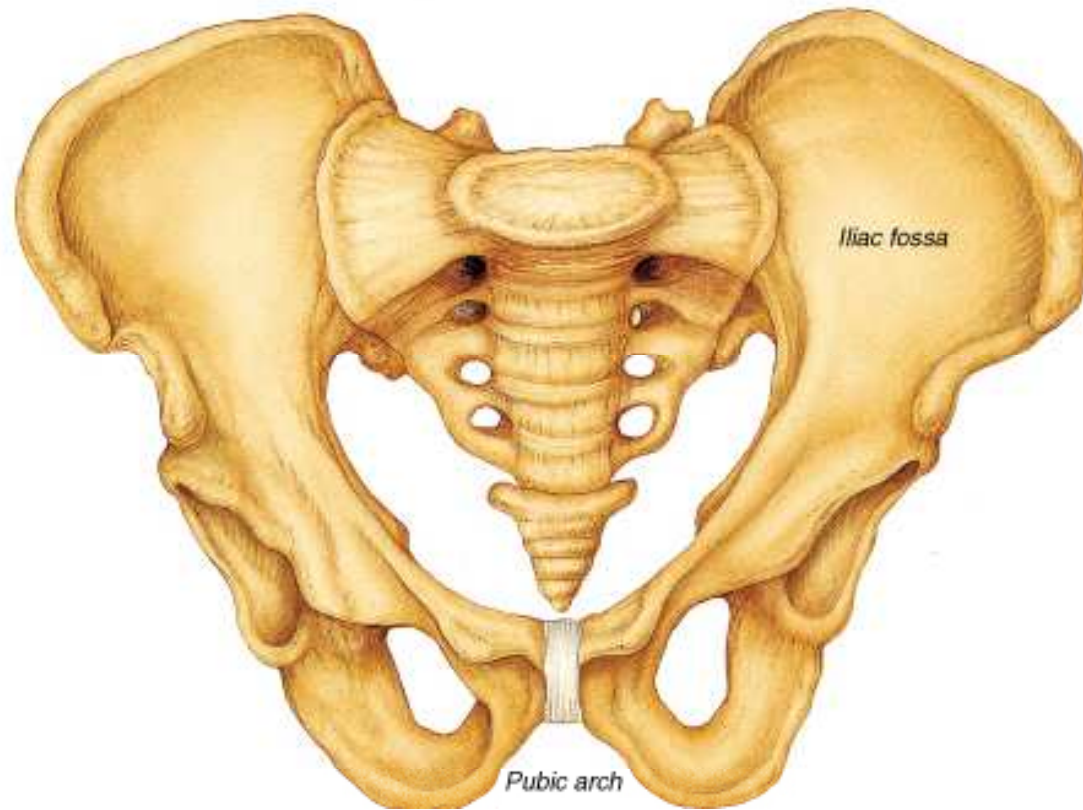


Sacrum and Coccyx

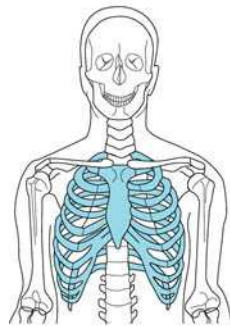
Five fused vertebrae (sacrum)



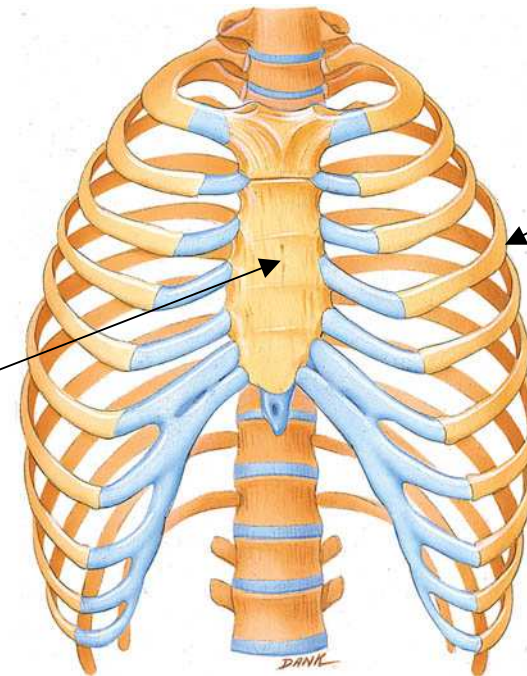
Sacrum with pelvic bones



Thoracic cage



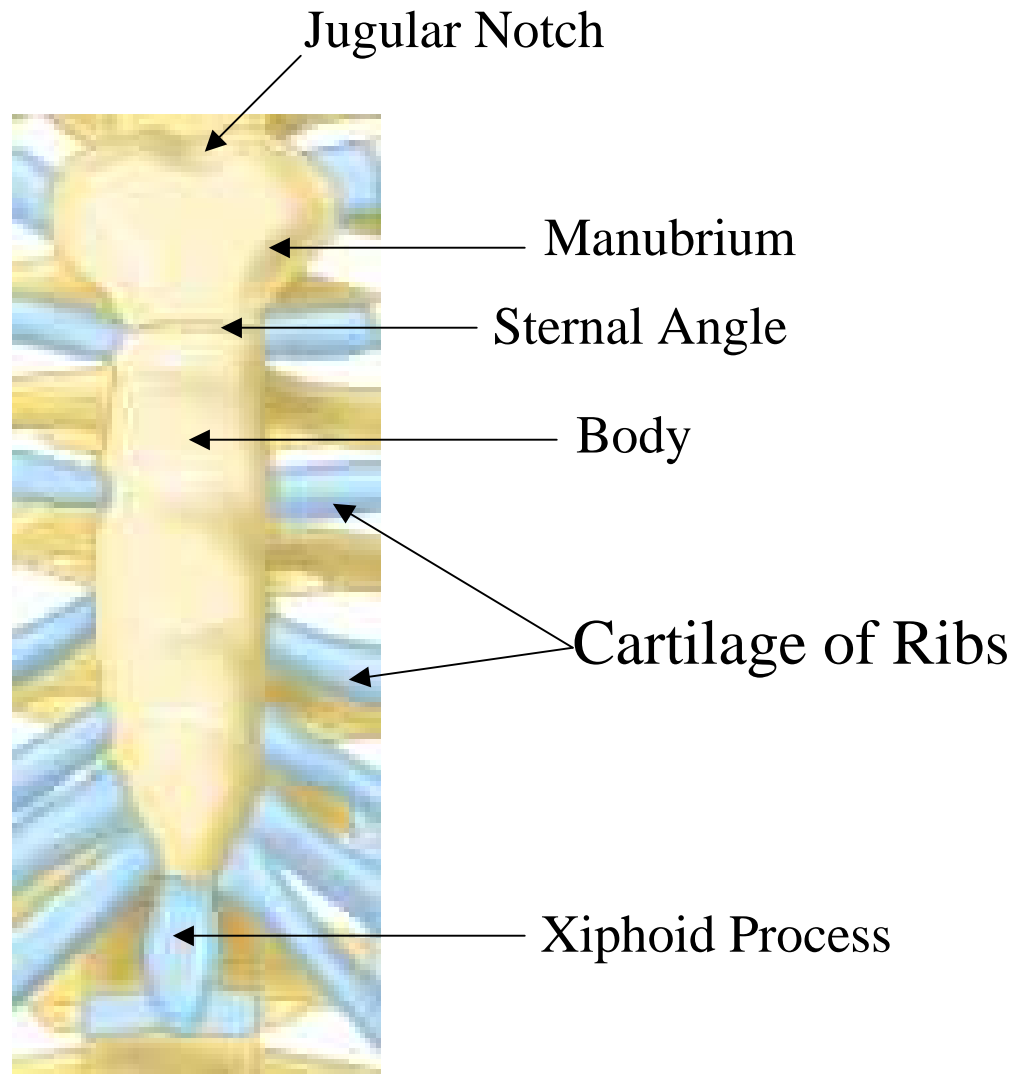
Sternum



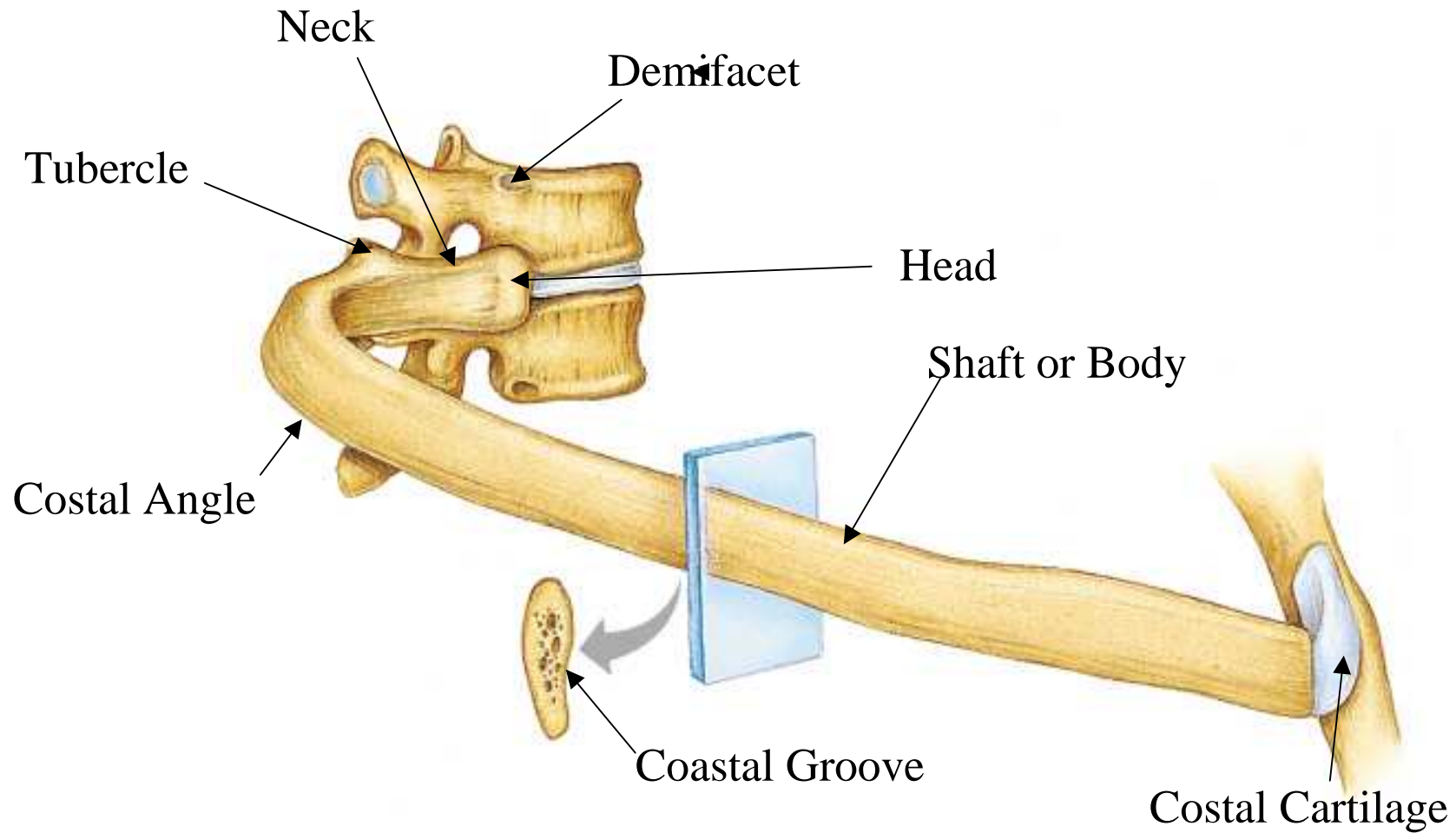
Ribs

Thoracic cage

Sternum - "breastbone"



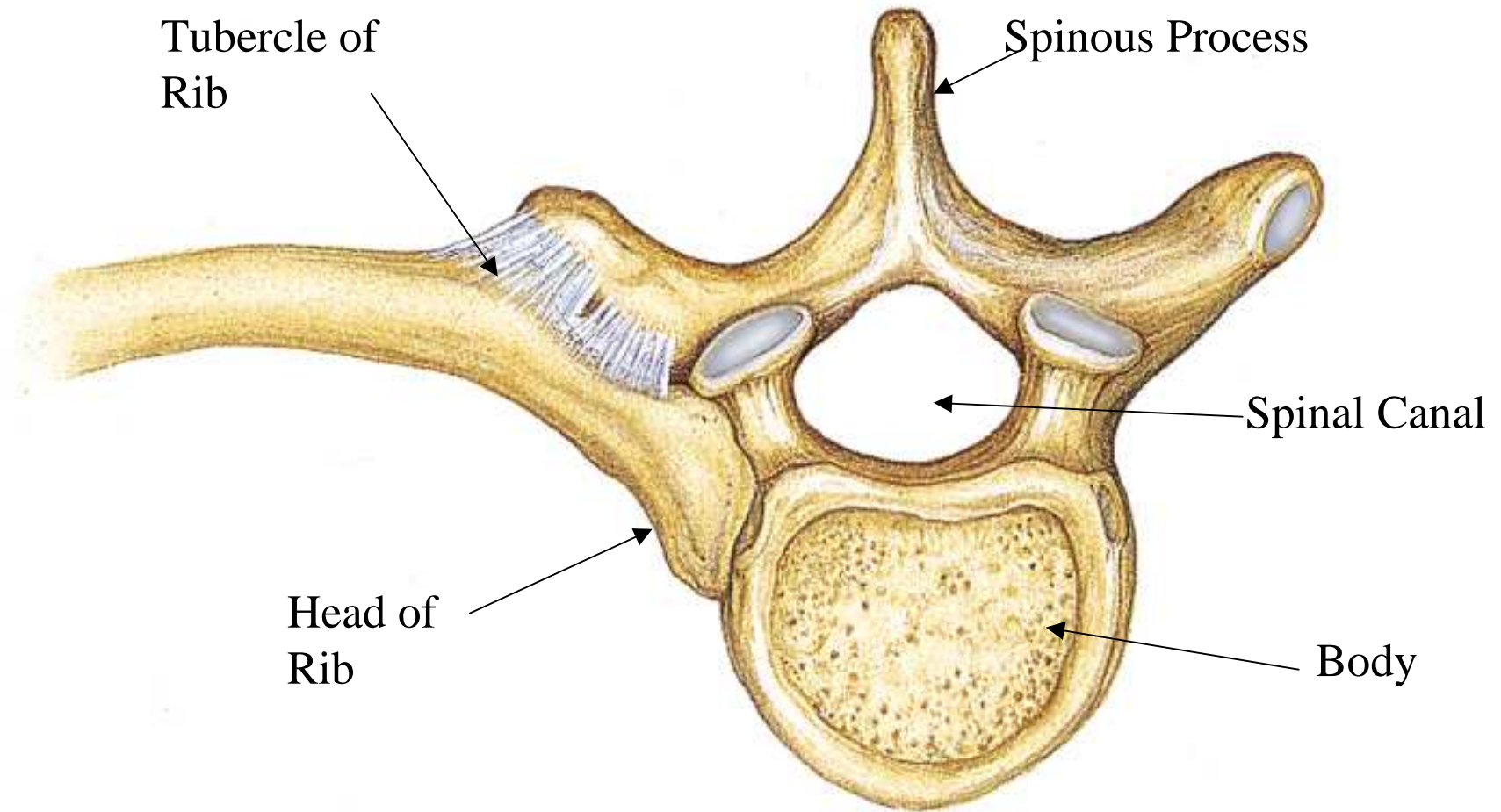
Anatomy of a Rib



(a)

Copyright © 2001 Benjamin Cummings, an imprint of Addison Wesley Longman, Inc.

Articulation of Ribs with Vertebra



(b)

Copyright © 2001 Benjamin Cummings, an imprint of Addison Wesley Longman, Inc.